

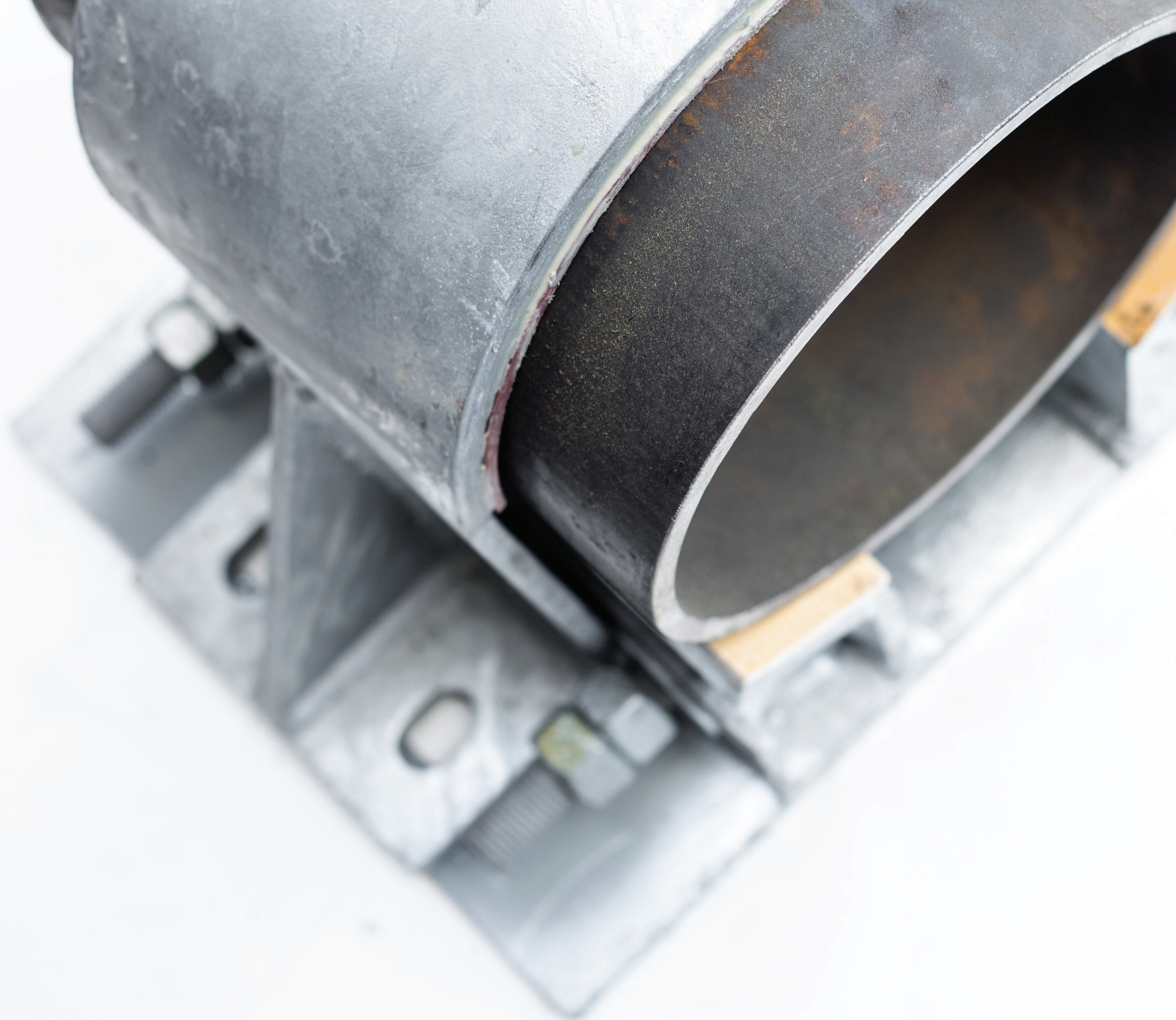


# ASHLAND FABRICATION, INC.

———— Product Catalog ————

[www.ashlandfabrication.com](http://www.ashlandfabrication.com)





## SUPPORTING ALL MAJOR OIL AND GAS COMPANIES

**Ashland Fabrication, Inc.** supplies adjustable pipe supports, integrity blocks and customized support products to today's energy companies.

Ashland Fabrication, Inc. provides clients with cost-effective and user friendly applications. At Ashland Fabrication, Inc., we will work with you to bring the best fit to your company.

*All Ashland Fabrication, Inc. products are proudly made in Pennsylvania, the heart of the Appalachian Basin.*

[www.ashlandfabrication.com](http://www.ashlandfabrication.com)

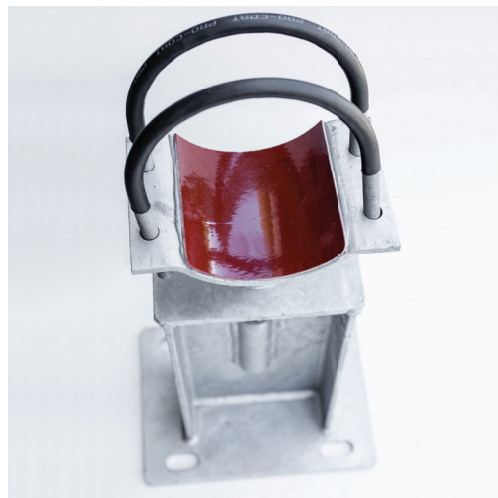


# FEATURED PRODUCTS

## Ashland Adjustable Pipe Support

An over-sized internally threaded fitting is welded directly to the support bracket. This provides an increased weld surface area, significantly reducing the possibility of failure at a high-stress point.

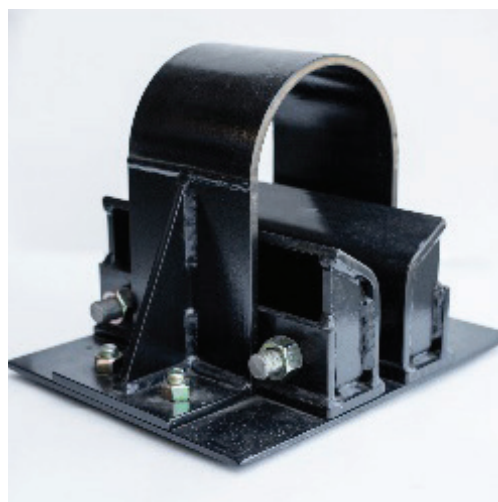
*\*See page 2 for additional details and dimensional drawings.*



## Ashland Integrity Block

Our design features the ability to handle harsh applications, while offering easy accessibility for field operations and Pipeline Integrity inspections.

*\*See page 4 for additional details and dimensional drawings.*



## Custom Solutions

Customized support products are also available. Please contact your sales representative to learn more.





## What is Rhino HardLine®?

Providing superior high-level chemical resistance and protection against impact, abrasion and corrosion for pipes, containment structures and surfaces requiring maximum protection, Rhino Hardline® is the recommended coating and lining for all Ashland Fabrication, Inc. products.



PICTURED:  
Pipe Support featuring  
Rhino Hardline®  
coating and liner.

# ASHLAND ADJUSTABLE PIPE SUPPORTS

## OPTIONS

- Available sizes 2" - 42"
- Support Configurations
- 120° Support Bracket (with or without U-Bolts)
- FlatTop with U-Bolts and D-Pad  
*Customized Supports Available*

## COATINGS

- Galvanized, Primer Only, Painted, Bare, Rhino Hardline®

## LINING

- FRP, PVC, Rhino Hardline®, Neoprene, No lining

## HEIGHT ADJUSTMENT RANGES

- 12" - 48" in stock  
*Customized Heights Available*

## FEATURES

- Non-Welded Threaded Adjustment Rod
- Increased Load Capacity
- Larger I-Beam
- Operator Friendly Adjustment Opening
- Custom Designs Available
- Load Limit Calculations  
Readily Available (see page 8)

# Ashland Adjustable Pipe Supports

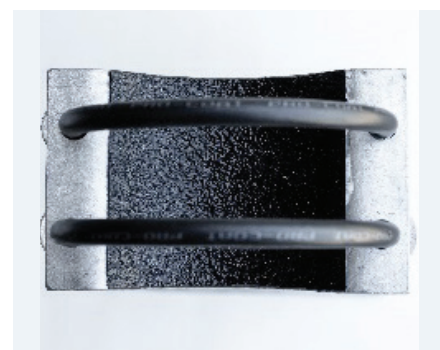
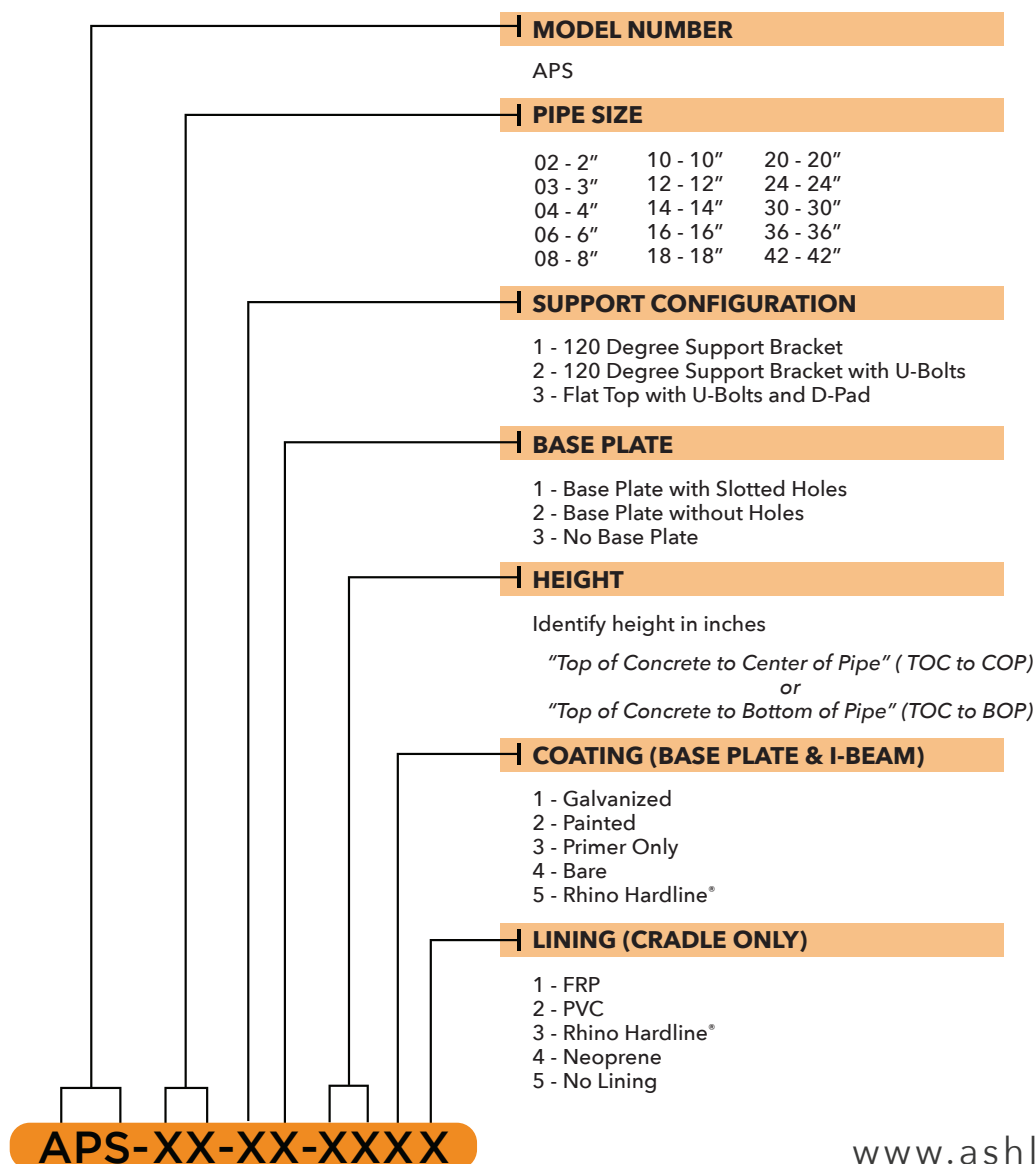
Ashland Adjustable Pipe Supports are engineered to serve the Commercial, Gas & Oil, and Petrochemical Industries.

Our designs feature the ability to handle harsh applications, while offering easy accessibility for field operations and Pipeline Integrity inspections. An oversized internally threaded fitting is welded directly to the support bracket. This provides an increased weld surface area connecting the adjustment thread to the support, significantly reducing the possibility of failure at a high-stress point.

Our products are proudly manufactured in the USA. We carry a large inventory of galvanized components in order to provide quick turnaround on deliveries of standard pipe sizes (2" - 42") and beam heights (12" - 48").

*Customized solutions are also available.*

**Please follow the diagram below to place your Ashland Adjustable Pipe Supports order.**



PICTURED TOP TO BOTTOM:  
Galvanized pipe support with FRP  
lining, Galvanized pipe support  
with Rhino Hardline® liner



PICTURED:  
Ashland Integrity  
Blocks featuring  
Rhino Hardline®  
coating and lining.

# ASHLAND INTEGRITY BLOCKS

## OPTIONS

- Available sizes 2" - 42"
- Epoxy Chock Blocks - Option

## COATINGS

- Galvanized, Painted, Rhino Hardline®, Primer-Only, Bare

## LINING

- FRP, PVC, Rhino Hardline®, Fabreeka, No Lining

## HEIGHT ADJUSTMENT RANGES

- Call (814) 797-2224 for details

## FEATURES

- Easy removal of Integrity Blocks for performing Pipeline Integrity Inspections
- Custom designs available
- Load limit calculations readily available (see page 9)

# Ashland Integrity Blocks

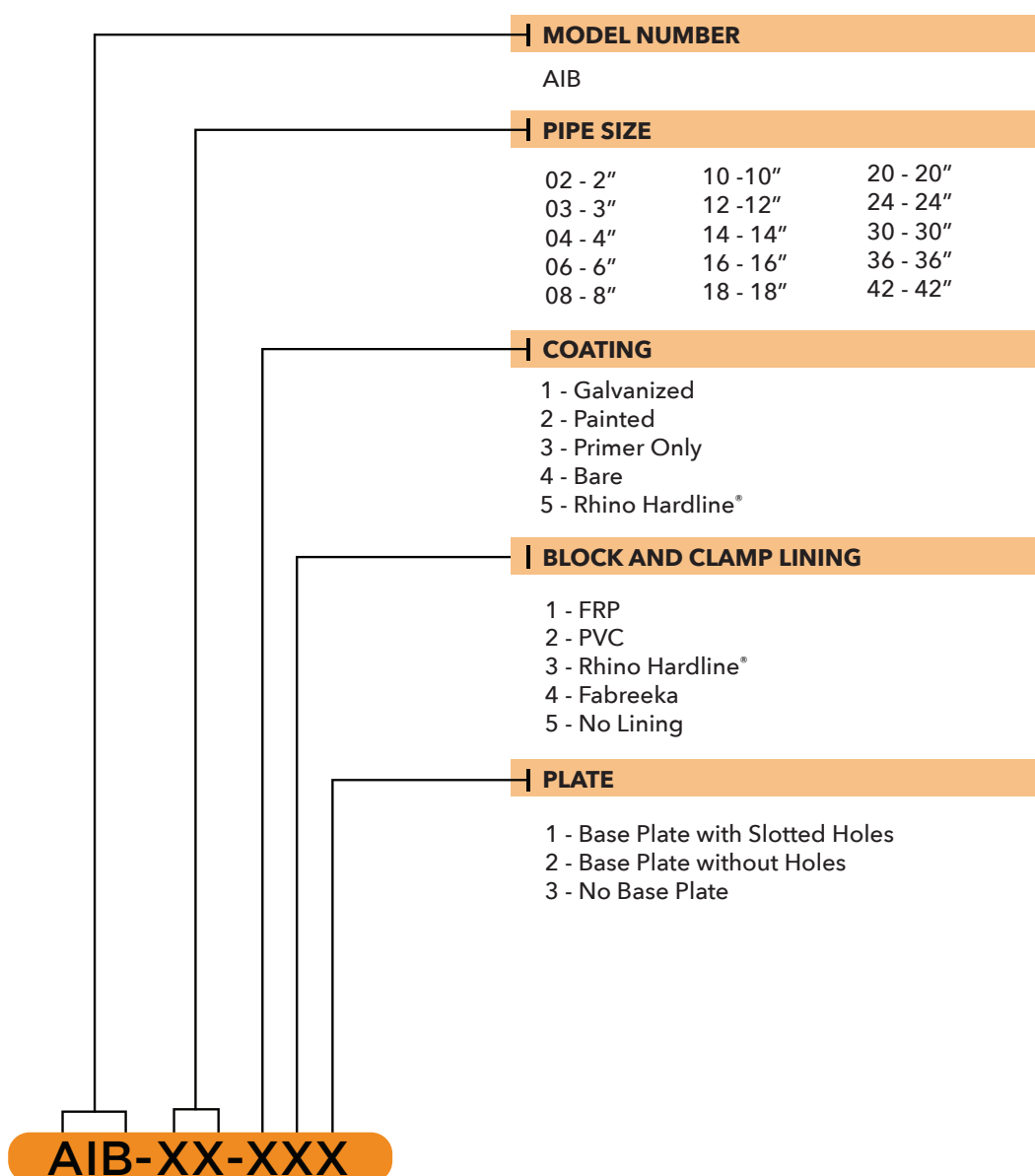
**Ashland Integrity Blocks** are engineered to serve the Commercial, Gas & Oil and Petrochemical Industries.

Our design features the ability to handle harsh applications, while offering easy accessibility for field operations and Pipeline Integrity Inspections.

Our products are proudly manufactured in the USA. We carry a large inventory of 4" - 16" galvanized Integrity Blocks in stock and ready for immediate delivery. Additional material and components are also in stock to provide quick turnaround on deliveries of all pipe sizes.

*Customized solutions are also available.*

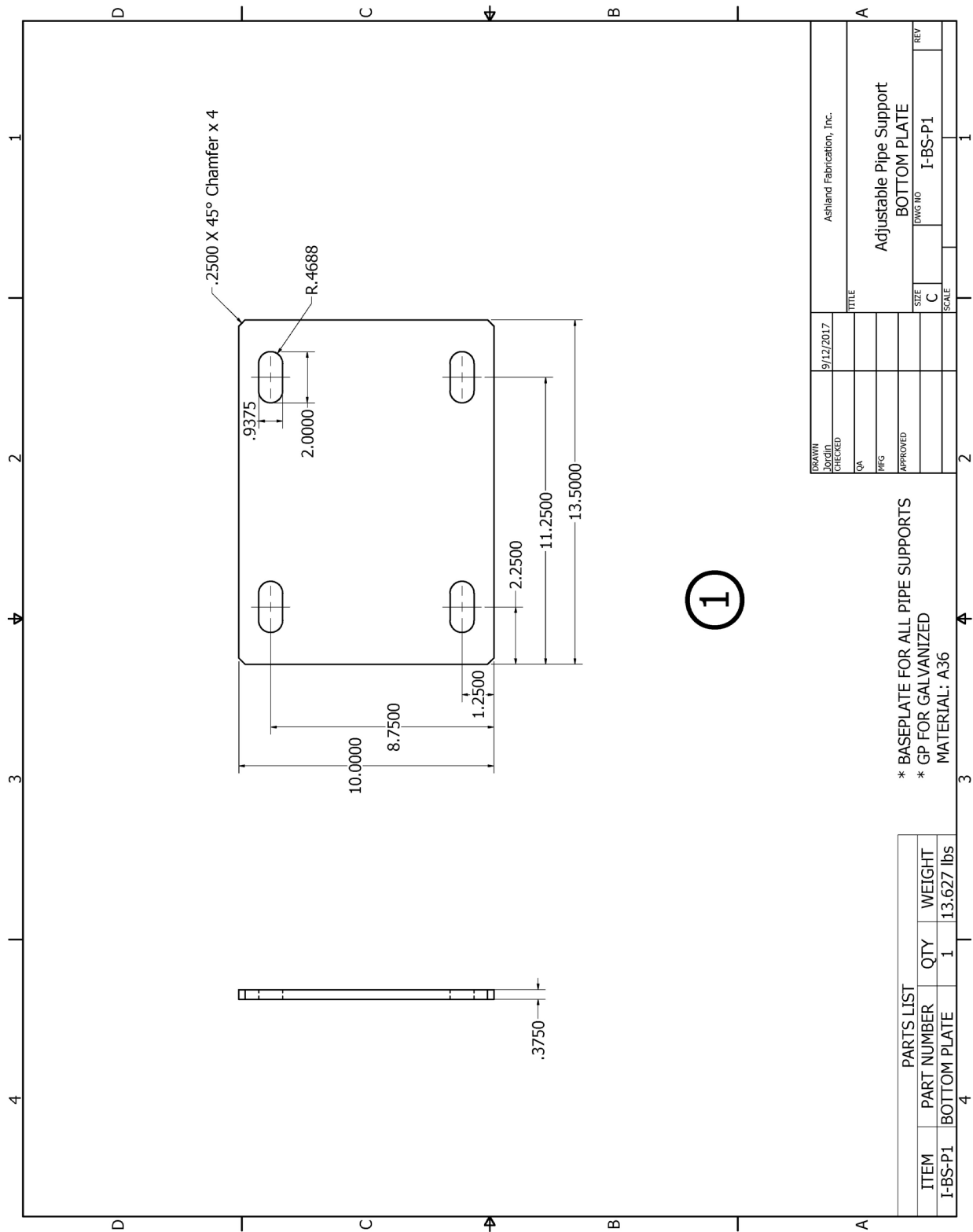
**Please follow the diagram below to place your Ashland Integrity Blocks order.**



PICTURED TOP TO BOTTOM:  
Galvanized integrity block with pipe in,  
Ashland Fabrication, Inc. warehouse



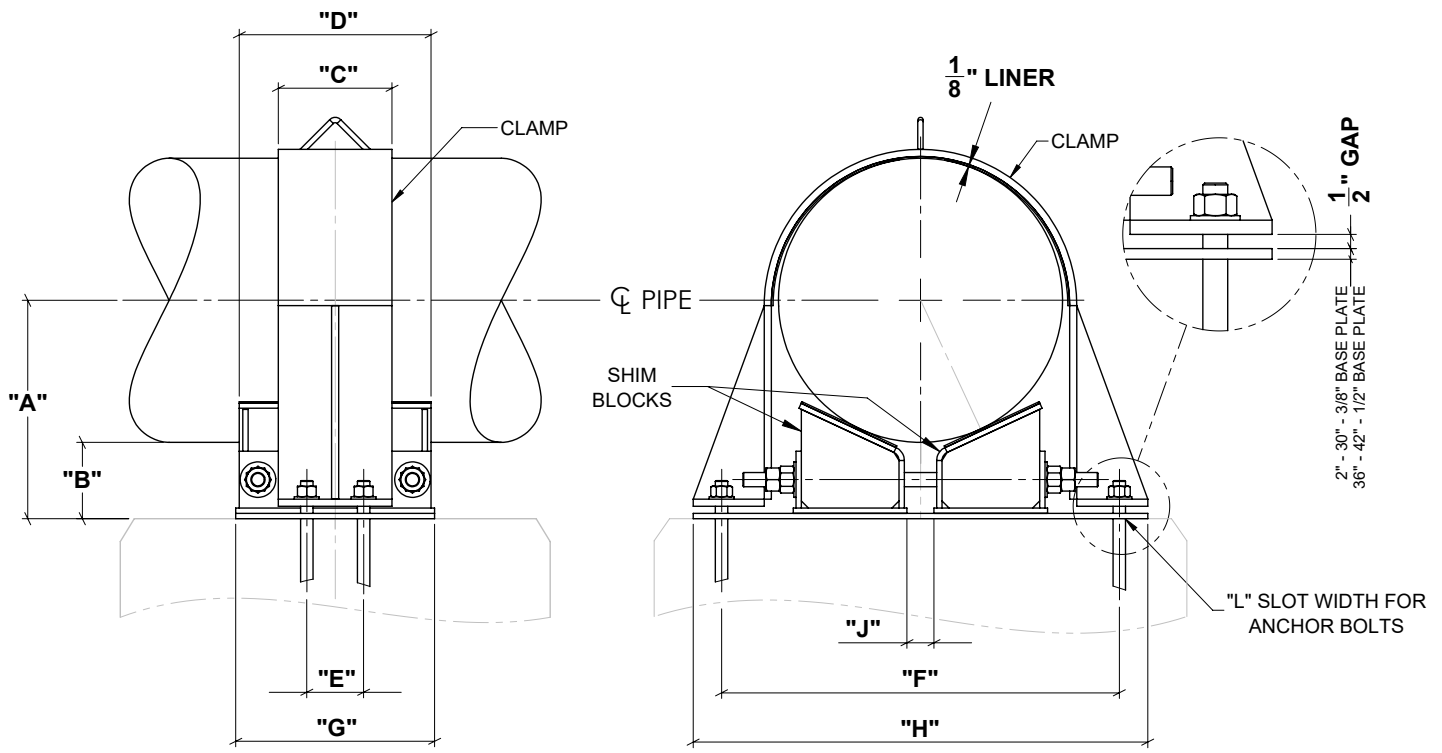
# ASHLAND FABRICATION, INC.



**Adjustable Pipe Support Base Plate Dimensional Drawing**



# PRODUCT TECHNICAL DRAWINGS



## Integrity Block Dimensional Drawing

Pipe Size	"A"	"B"	"C"	"D"	"E"	"F"	"G"	"H"	"J"	"L"
2"	4 11/18"	3 1/2"	6"	11 1/2"	3 1/2"	8'	1'-0'	11"	-	7/8"
3"	5 3/8"	3 5/8"	6"	11 1/2"	3 1/2"	9'	1'-0'	1'-0"	7/16"	7/8"
4"	6 1/8"	3 7/8"	6"	11 1/2"	3 1/2"	10'	1'-0'	1'-1"	1/2"	7/8"
6"	7 5/8"	4 5/16"	6"	11 1/2"	3 1/2"	1'-0'	1'-0'	1'-3"	1 1/4"	7/8"
8"	8 1/2"	4 3/16"	6"	11 1/2"	3 1/2"	1'-2'	1'-0'	1'-5"	2 1/4"	1 1/4"
10"	9 1/2"	4 1/8"	6"	11 1/2"	3 1/2"	1'-4'	1'-0'	1'-7"	3"	1 1/4"
12"	10 3/4"	4 3/8"	6"	11 1/2"	3 1/2"	1'-6'	1'-0'	1'-10"	4 1/16"	1 1/4"
14"	11 3/4"	4 3/4"	6"	11 1/2"	3 1/2"	1'-10'	1'-0'	2'-2"	1 3/8"	1 1/4"
16"	1'-0 3/8"	4 3/8"	8"	1'-1 1/2"	3 1/2"	2'-0'	1'-0'	2'-4"	1 1/2'	1 1/4"
18"	1'-1 1/2"	4 1/2"	8"	1'-1 1/2"	3 1/2"	2'-2'	1'-0'	2'-6"	1 1/4'	1 1/4"
20"	1'-3 3/8"	5 3/8"	8"	1'-1 1/2"	4"	2'-4'	1'-2'	2'-8"	1 7/8'	1 1/4"
24"	1'-5 1/4"	5 1/4"	8"	1'-1 1/2"	4"	2'-8'	1'-2'	3'-0"	4 5/8'	1 1/4"
30"	1'-9"	6"	10"	1'-5 1/2"	7"	3'-2'	1'-4'	3'-7"	7"	1 1/2"
36"	1'-11 3/4"	5 3/4"	10"	1'-5 1/2"	7"	3'-8'	1'-4'	4'-1'	8 1/16"	1 1/2"
42"	2'-3 5/8"	6 5/8"	1'-0'	1'-7 1/2"	7"	4'-2'	1'-6'	4'-8'	11'	1 3/4"

## Integrity Block Detail



# ASHLAND FABRICATION, INC.

## Ashland Adjustable Pipe Support (APS) Load Capacities\*

The load capacities provided herein were tabulated using recognized engineering principles with reference to the American Institute of Steel Construction (AISC) 14<sup>th</sup> Edition and verified using ANSYS. ANSYS is recognized as a global leader in engineering simulation. Results are provided for informational purposes only. All information is provided as is with ideal conditions, exclusive of any warranty. This includes without limitation, any implied warranty of merchantability, fitness for a particular use, or any other warranty, whether expressed or implied. This data cannot be used or relied upon for any specific application without professional examination and verification of its accuracy, suitability or applicability by a competent, licensed professional engineer. As such, the end user is also responsible for adequate foundation design, loading applications and anchoring.

*\* Load factors are calculated for service conditions above -20° Fahrenheit.*

Beam Length (In)	Vertical Limit (lbs)	Horizontal Limit X-X (lbs)	Horizontal Limit Y-Y (lbs)
10	8040	405	405
15	8040	405	405
20	8040	405	405
25	8040	405	405
30	8040	405	405
35	8040	405	405
40	8040	405	405
45	8040	405	405
50	8040	405	405
55	7704	405	393
60	7368	405	381
65	7032	405	369
70	6696	405	357
75	6360	405	345
80	6024	405	333
85	5688	405	321
90	5352	405	309
95	5016	405	297
100	4680	405	285
105	4344	405	273
110	4008	405	261
115	3672	405	249
120	3336	405	237

## Ashland Integrity Block (AIB) Load Capacities\*

The end user must understand how axial loading variables affect the clamping ability of the Integrity Block assembly. Thermal variables, coefficients of friction and bolting forces need to be calculated and evaluated on a case by case basis. User shall take into consideration the cyclical, axial and lateral loading when designing the concrete system. The piping designer should verify the effect of the Integrity Block assembly on the pipe wall based on all potential loading. System pressures must be determined on a case by case basis and are not provided for in these load calculations.

Pipe Size (inches)	Max Vertical Load (lbs)	Max Lateral Load (lbs)
2	13,900	6,100
3	13,900	6,100
4	16,300	8,550
6	31,380	8,550
8	31,380	8,550
10	31,380	13,080
12	47,200	13,080
14	47,200	13,080
16	47,200	13,080
18	53,000	13,080
20	53,000	13,080
24	53,000	13,080
30	77,900	16,050
36	77,900	16,050
42	77,900	21,250

\* Load factors are calculated for service conditions above -20° Fahrenheit.

### CONTACT US

For further information or assistance in interpreting the above load capacities, application evaluation or additional engineering services, please contact:

**ASHLAND FABRICATION, INC.**

Email: [info@ashlandfabrication.com](mailto:info@ashlandfabrication.com)

or

Call: (814)797-2224.





## FOR MORE INFORMATION

Contact your local sales representative:

Quotations: (814) 797-2224

[www.ashlandfabrication.com](http://www.ashlandfabrication.com)

